

Instruction for the LCS Matlab Kit

About LCS Matlab Kit

This MATLAB software package was developed in the Biological Propulsion Laboratory at California Institute of Technology. It enables users to input a time-series of 2-D velocity field data (e.g., DPIV measurements or CFD calculations) and compute the corresponding finite-time Lyapunov exponent (FTLE) fields, from which Lagrangian Coherent Structures (LCS) such as vortices and fluid transport barriers can be identified. Before reading the following instruction, please see [Shadden et al. \(2006\)](#) or the [LCS Online Tutorial](#) for background and technical details.

Requirement for operation system and Matlab

This software kit requires Matlab 7.0 or higher version to run. No special toolbox is required. It has been tested in Windows XP. Since all the codes are written in Matlab language, it is assumed that it is able to run in other systems as long as Matlab is installed.

How to Use

Step 1. Start the software

- 1.1 Run Matlab;
- 1.2 Open LCS_Calculation.m and run it;
- 1.3 The Graphic User Interface (GUI) shows like Fig. 1.1.

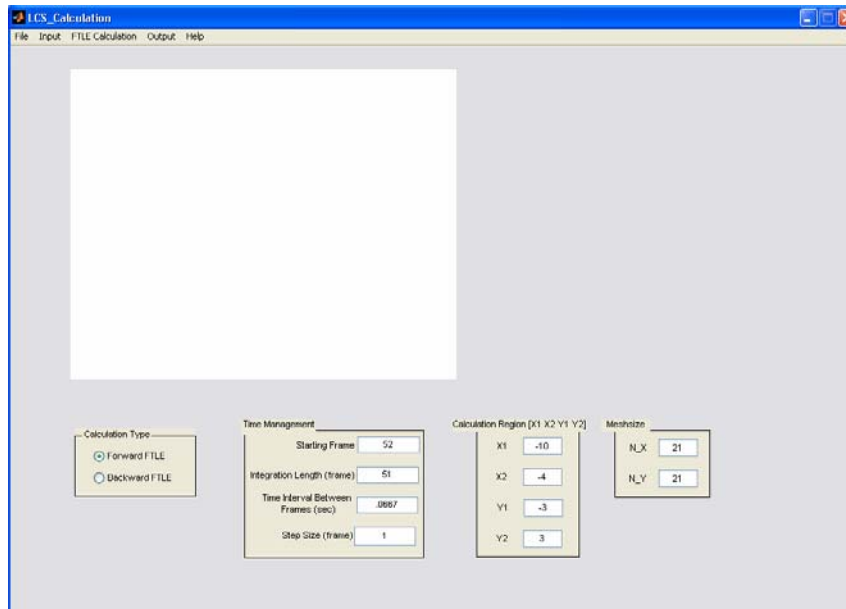


Figure 1.1

Step 2. Load original data files

Users need to load a time-series of original 2-D velocity data files, either from DPIV measurements or from CFD calculations. As in usual, these files are named in such a way that their names have the same prefix and an integer from an ascending

number series. For example, 'velocity00.txt', 'velocity01.txt', 'velocity02.txt'.....

The current version supports original velocity data files in text (.txt) and worksheet (.wk1) format. However, the data layouts in these files have to be of the following format:

- a.) Each file contains velocity data on the same $M \times N$ grid. It has four columns:
 - Column 1: x coordinates (X);
 - Column 2: y coordinates (Y);
 - Column 3: x velocity (U);
 - Column 4: y velocity (V);
- b.) X and Y coordinates are sorted in ascending order;
- c.) Each row indicates the velocity data (U, V) at that location (X, Y).

The following is an example of the velocity file:

X_1	Y_1	U_{11}	V_{11}
X_1	Y_2	U_{12}	V_{12}
X_1	Y_3	U_{13}	V_{13}
.....			
X_1	Y_N	U_{1N}	V_{1N}
X_2	Y_1	U_{21}	V_{21}
.....			
X_2	Y_N	U_{2N}	V_{2N}
.....			
X_M	Y_1	U_{M1}	V_{M1}
.....			
X_M	Y_N	U_{MN}	V_{MN}

The followings are steps to load the velocity files:

- 2.1 From the GUI, select from menu 'Input -> Load Original Data'. A 'Select File to Open' dialogue box appears. Select the velocity files and click 'Open' (Fig. 2.1).

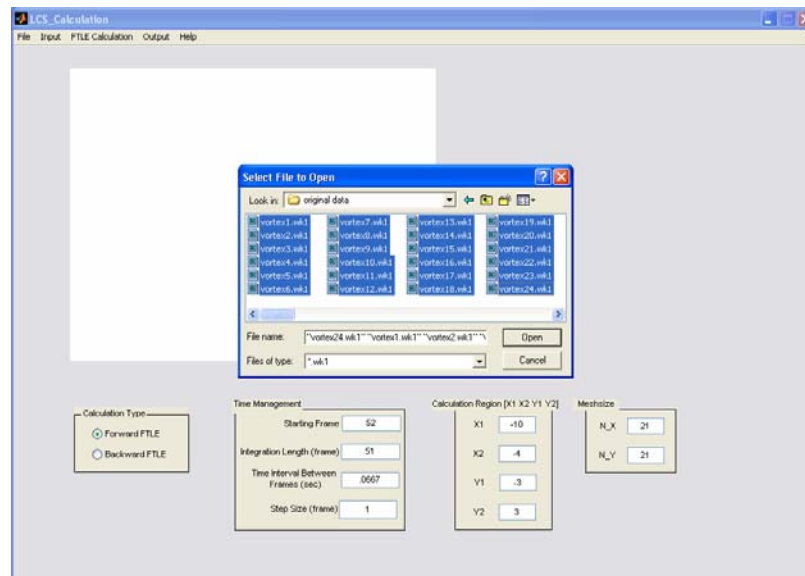


Figure 2.1

2.2 Since the software runs in Matlab, all velocity files need to be converted into Matlab .mat files to reduce computational time (velocity files are repeatedly read in the computation). Select from menu 'Input -> Convert to MAT files'. A 'Browse for Folder' dialogue box appears. Select the folder in which you want these .mat files to be saved. After clicking 'OK', a new dialogue box appears in which users need to enter the starting frame number. It is suggested to use the default value '1'. Then click 'OK' (Fig. 2.2).

This step would generate a series of files named 'U_T1, U_T2....' and a series of files named 'V_T1, V_T2....'. All of the files are of an $M \times N$ matrix, with U_T and V_T represent X velocity and Y velocity, respectively. It is noted that no matter what numeration is used in naming the original velocity file, the converted files use the numeration '1, 2, 3,'. In addition, two files named 'xgrid.mat' and 'ygrid.mat' are generated which contains coordinates of the grid. In summary, for an $M \times N$ grid, 'xgrid' is an $M \times 1$ vector while 'ygrid' is an $N \times 1$ vector. 'U_T' and 'V_T' are $M \times N$ matrix. $U_T(i,j)$ and $V_T(i,j)$ indicate x and y velocity at location $[xgrid(i), ygrid(j)]$.

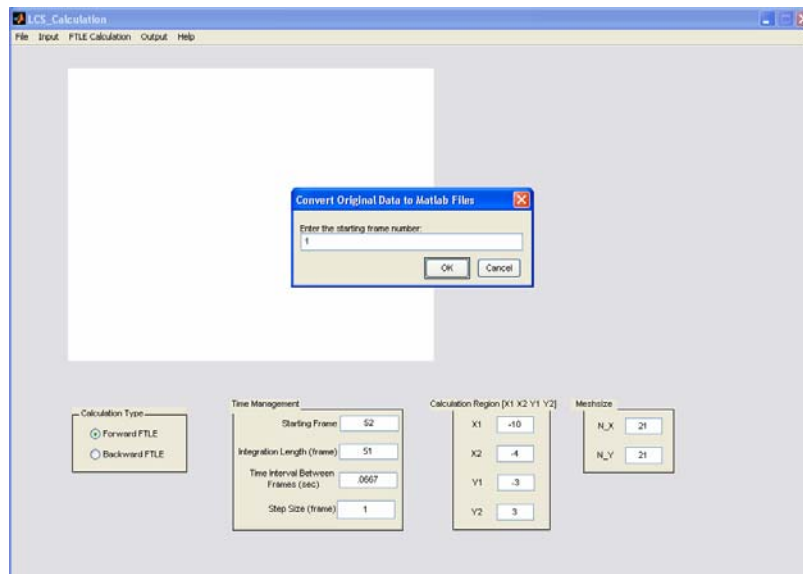


Figure 2.2

2.3 The velocity can be plotted by selecting 'Input -> Plot Velocity Field'. Enter the starting and ending frame number in the dialogue box. Then click 'OK' and the velocity field is plotted on the interface (Fig. 2.3). Make sure the starting and ending frames number do not exceed the number of frames.

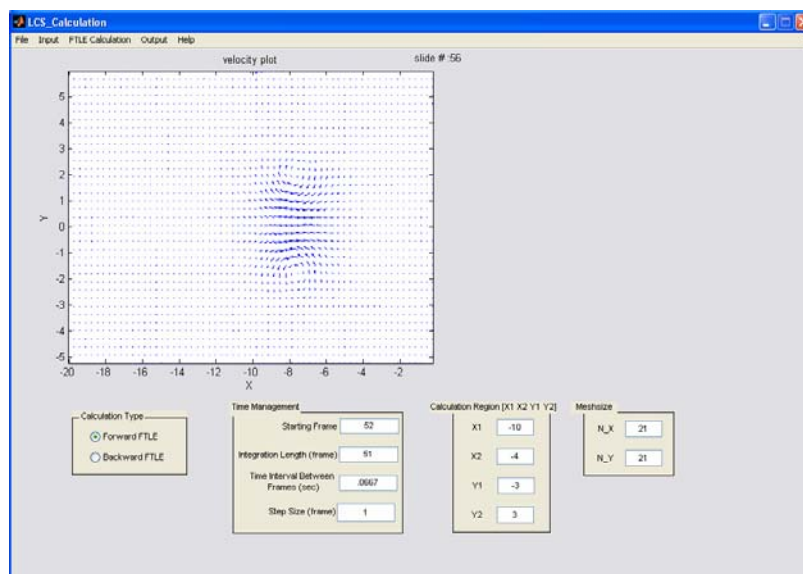


Figure 2.3

Notes:

Due to an internal bug in Matlab command 'uigetfile', it sometimes fails to open large number of files. An error dialog (Fig. 2.4) will show in this case. So don't try to load all the original velocity files and convert them at the same time. Just convert a portion of them and enter the correct starting frame number for every conversion. Make sure the frame numbers are continuous integers. To load and convert more files at one time, make the name for the

original files as short as possible, e.g., V01.txt, V02.txt.....

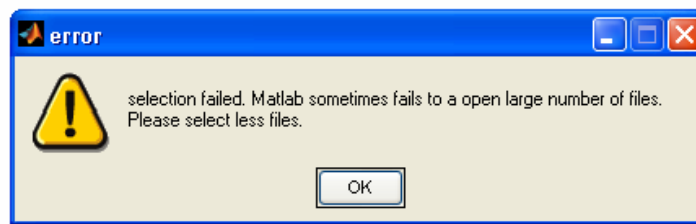


Figure 2.4

Step 3. Set up the parameters and calculate FTLE

All the parameters users need to assign values are shown on the GUI panel.

3.1 In the Calculation Type group box, choose Forward or Backward FTLE calculation;

3.2 In the Time Management edit boxes, enter values for integration parameters.

a.) Starting Frame:

In frame number, not in actual time. This parameter shows the frame at which the FTLE is calculated;

b.) Integration Length:

In frames. This parameter tells the time duration over which the trajectories are integrated.

c.) Time interval between consecutive frames:

In seconds. This is the actual time interval between two consecutive frames.

d.) Step size:

Number of frames per integration step. Default to 1.

3.3 Calculation region and mesh size

[X1 X2 Y1 Y2] is the computational domain over which the FTLE is calculated. It must be a sub-domain of the velocity field. In this domain, the FTLE is calculated on nodes of a $N_X \times N_Y$ grid. Larger N_X and N_Y give result with high resolution, but the computation cost is higher. Generally, use a larger computational domain with a course grid to get some rough understanding of LCS in initial trials, then limit the domain to where the LCS is located and adopt a denser grid.

3.4 Calculate FTLE

Click menu 'FTLE Calculation -> Compute FTLE' to start the calculation. FTLE is calculated and plotted on the GUI panel (Fig. 3.1)

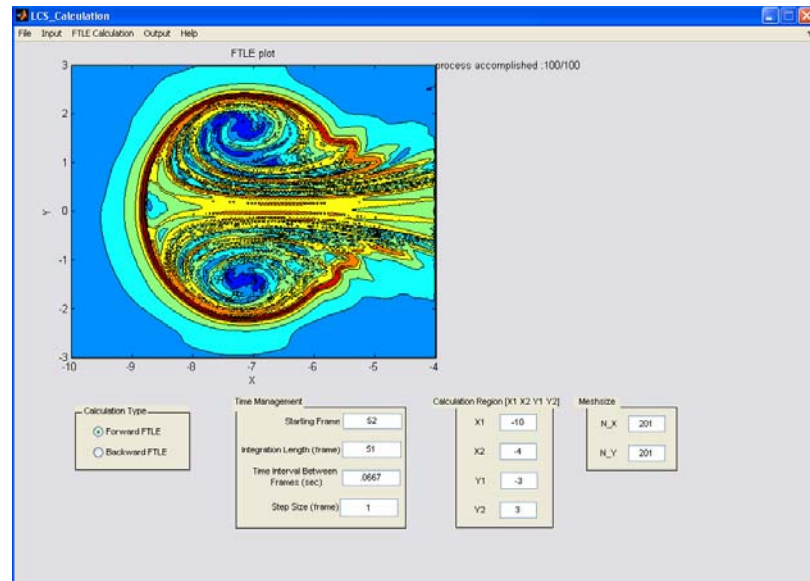


Figure 3.1

Step 4. Save the result.

Click menu 'Output -> Save FTLE Calculation' to save the result. The saved result is a text (.txt) file with Tecplot contour plot heading. It can be directly loaded into Tecplot.

Acknowledgement

Great thanks to Shawn Shadden, whose work provides theoretical background and numerical algorithm of this software kit.

References

1. Shadden, S. C., Dabiri, J. O. and Marsden, J. E. (2006) Lagrangian analysis of entrained and detrained fluid in vortex rings. *Phys. Fluids* **18**, 047105.
2. Lagrangian Coherent Structures: Analysis of time-dependent dynamics system using finite-element Lyapunov exponents. <http://www.cds.caltech.edu/~shawn/LCS-tutorial/>